

# VULNERABLE POPULATIONS: PEOPLE WITH DISABILITIES

William Schwab, MD  
Professor and Vice-Chair,  
University of Wisconsin School of Medicine and Public Health  
Department of Family Medicine and Community Health

Portland, Oregon — April 22-25, 2017



STARFIELD SUMMIT



Portland, Oregon — April 22-25, 2017

 STARFIELD SUMMIT

# Medically Underserved Populations

- MUPs are specific sub-groups of people living in a defined geographic area with a shortage of primary care health services. These groups may face economic, cultural, or linguistic barriers to health care. Examples include, but are not limited to, those who are:
  - homeless;
  - low-income;
  - Medicaid-eligible;
  - Native American; or
  - migrant farmworkers

*- Health Resources and Services Administration*



# Are people with Developmental Disabilities/ Intellectual Disabilities a Medically Underserved Population? *(HRSA says No)*



# People with DD/ID – A Sub-group?

MUPs are specific **sub-groups of people** living in a **defined geographic area** with a shortage of primary care health services. These groups may face economic, cultural, or linguistic barriers to health care.



# People with DD/ID – A Sub-group?

## Developmental Disabilities -- Definition

“A group of conditions due to an impairment in physical, learning, language, or behavior areas. These conditions begin during the developmental period, may impact day-to-day functioning, and usually last throughout a person’s lifetime “

*-Centers for Disease Control and Prevention(CDC)*



# People with DD/ID – A Sub-group?

## Intellectual Disabilities -- Definition

“A disability characterized by significant limitations both in intellectual functioning (reasoning, learning, problem solving) and in adaptive behavior, which covers a range of everyday social and practical skills. This disability originates before the age of 18.”

*- American Association on Intellectual and Developmental Disability*





# People with DD/ID – A Sub-group?

- 2% of US population
  - Range of medical conditions
  - Higher population impact
- Geographically dispersed





# People with DD/ID – Shortage of Primary Care?

MUPs are specific sub-groups of people living in a defined geographic area with a **shortage of primary care health services**. These groups may face economic, cultural, or linguistic barriers to health care.



# People with DD/ID – Shortage of Primary Care?

- See doctors more often
- Content of care is less satisfactory
  - Less preventive care than general population
  - Familiarity with disability-specific issues
- Medical providers are less comfortable providing care
  - Familiarity with disability-specific issues



# People with DD/ID – Barriers to Care?

MUPs are specific sub-groups of people living in a defined geographic area with a shortage of primary care health services. These groups may face **economic, cultural, or linguistic barriers** to health care.



# People with DD/ID – Barriers to Care?

- Economic
  - Poor, Un/underemployed, Medicaid/Medicare
  - Dependent on underpaid, under supported direct care workers
- Cultural
  - Cross disability issues
  - Racial/ethnic factors intensify differentials in care
- Linguistic
  - Communication access, Health literacy

# Are people with Developmental Disabilities/ Intellectual Disabilities a Medically Underserved Population?

Portland, Oregon — April 22-25, 2017



STARFIELD SUMMIT

# Health Disparity Populations -- Definition

“A significant disparity in the overall rate of disease incidence, prevalence, morbidity, mortality or survival rates in the population as compared to the health status of the general population”

*-National Institute on Minority Health and Health Disparities*



Are individuals with Developmental  
Disabilities/ Intellectual Disabilities a  
health disparities target group ?  
***(NIMHD says No)***





# People with DD/ID – Mortality/Survival?

“A significant disparity in the overall rate of disease incidence, prevalence, morbidity, **mortality or survival rates** in the population as compared to the health status of the general population”



# Mortality

## At What Ages Do People with ID/DD Die?

Average Age at Death by Gender, 2011|

Gender	Average Age at Death MA DDS	Average Age of Death US General Population
Female	<b>62.5</b>	<b>81.1</b>
Male	<b>59.9</b>	<b>76.3</b>



# People with DD/ID – Morbidity?

“A significant disparity in the overall rate of **disease incidence, prevalence, morbidity**, mortality or survival rates in the population as compared to the health status of the general population”



# People with DD/ID – Morbidity?

- Higher rates of certain diseases/conditions
  - More complications from those diseases when compared with the general population
- Social Isolation
  - Over 50% of people with DD/ID report no regular social interactions with people who are not related to them or paid to work with them



# People with DD/ID – Morbidity?

- “Social relationships, or the relative lack thereof, constitute a major risk factor for health—rivaling the effect of well established health risk factors such as cigarette smoking, blood pressure, blood lipids, obesity and physical activity”

—House, Landis, and Umberson; *Science* 1988

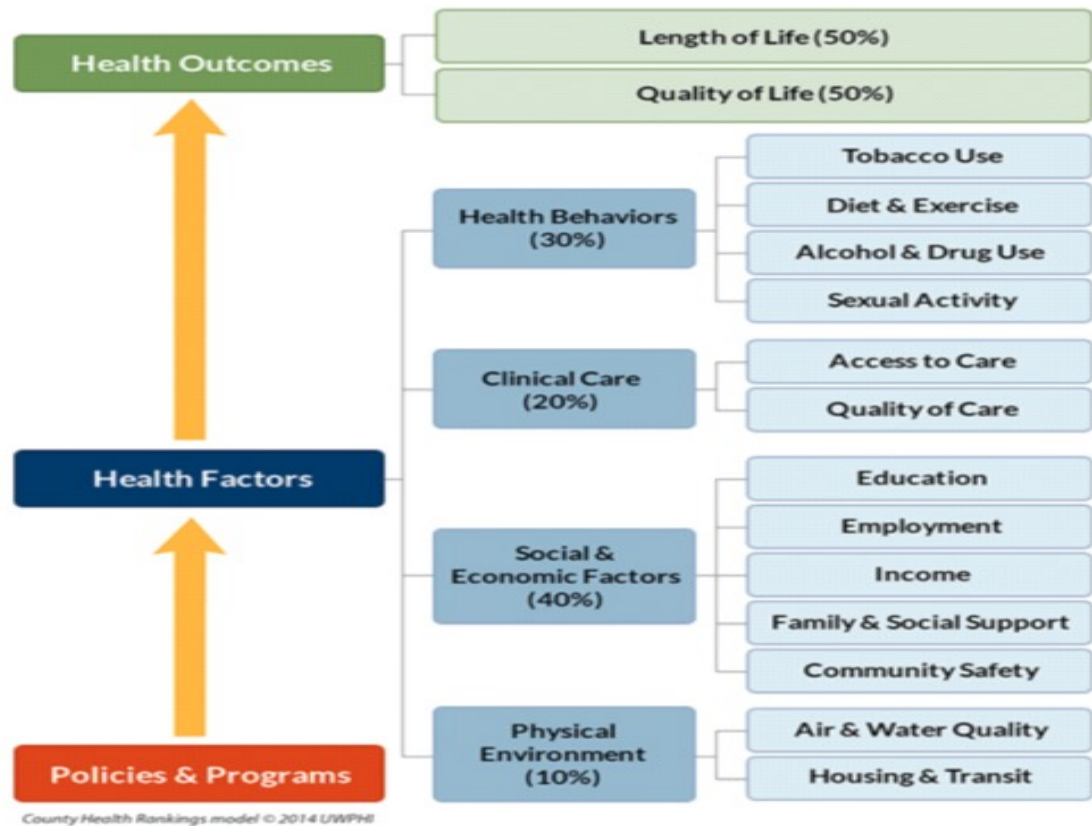
- Across 148 studies (308,849 participants), the random effects weighted average effect size was  $OR = 1.50$  (95% CI 1.42 to 1.59), indicating a 50% increased likelihood of survival for participants with stronger social relationships. This finding remained consistent across age, sex, initial health status, cause of death, and follow-up period.

-Julianne Holt-Lunstad, Timothy B. Smith, J. Bradley Layton (2010). *Social Relationships and Mortality Risk: A Meta-analytic Review*. *PLoS Med* 7(7): e1000316. doi:10.1371/journal.pmed.1000316.



Are individuals with Developmental Disabilities/ Intellectual Disabilities a health disparities target group ?







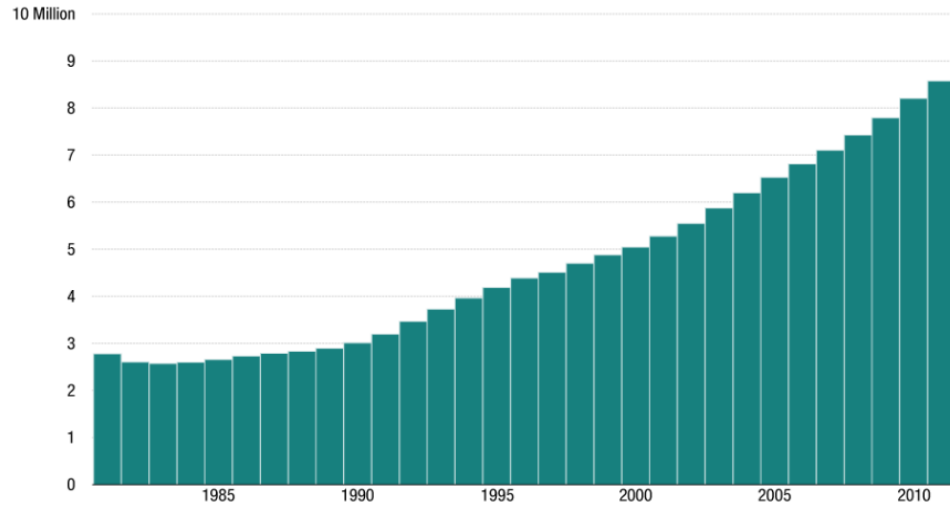
# People with Disabilities of All Types

- **Disability:** a physical or mental impairment that substantially limits one or more major life activity  
*(refers to lifelong or acquired conditions)*

*-Americans with Disabilities Act*



Number Of Former Workers On Disability

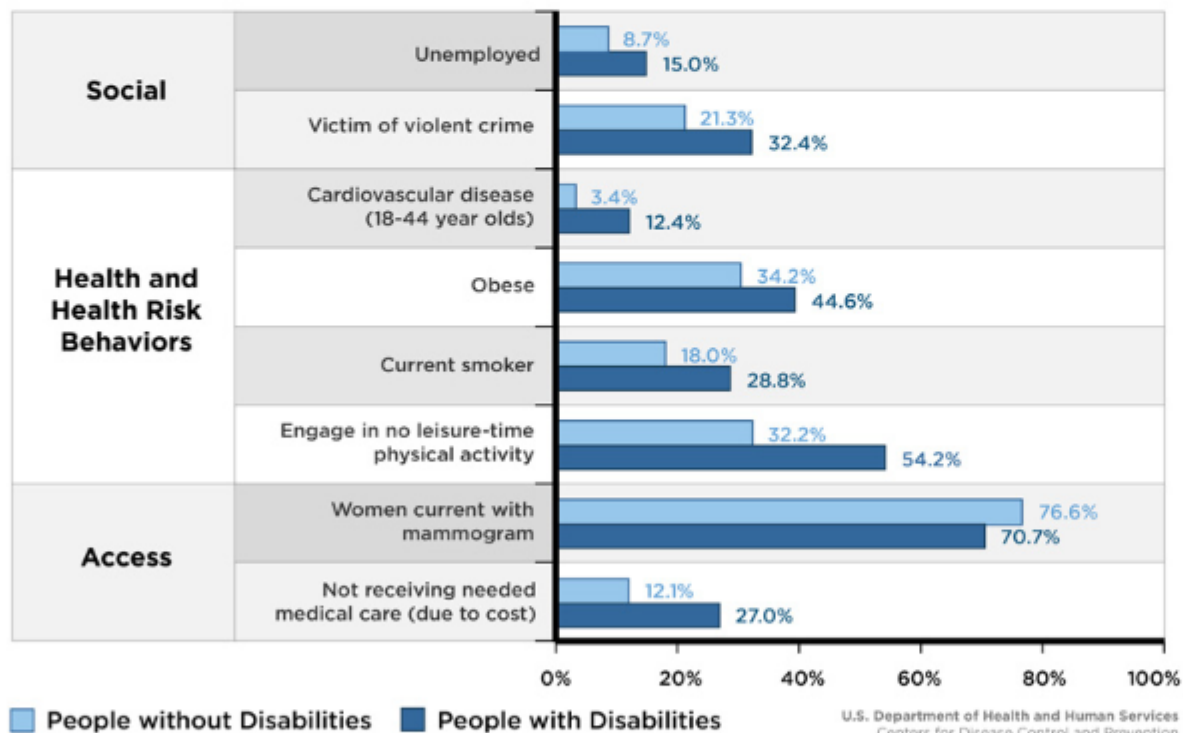


Source: Social Security Administration

“Disability is an ambiguous demographic, but one that is unambiguously increasing.”

-Glenn T. Fujiura (2001)

# Factors Affecting the Health of People with Disabilities and without Disabilities



U.S. Department of Health and Human Services  
Centers for Disease Control and Prevention

# Patient- and Family-Centered Care

An approach to the planning, delivery, and evaluation of health care that is grounded in mutually beneficial partnerships among health care providers, patients, and families

*- Institute for Patient- and Family-Centered Care*





Portland, Oregon — April 22-25, 2017

 STARFIELD SUMMIT

# Toddler Property Laws

1. If I like it, it's mine.



# Toddler Property Laws

1. If I like it, it's mine.

2. If it's in my hand, it's mine.





# Toddler Property Laws

1. If I like it, it's mine.
2. If it's in my hand, it's mine.
3. If I can take it from you,  
it's mine.



# Toddler Property Laws

1. If I like it, it's mine.
2. If it's in my hand, it's mine.
3. If I can take it from you,  
it's mine.
4. If I had it a little while ago,  
it's mine.



# Toddler Property Laws

5. If it's mine, it must NEVER appear to be yours in any way.



# Toddler Property Laws

5. If it's mine, it must NEVER appear to be yours in any way.
6. If I'm doing or building something, all of the pieces are mine.



# Toddler Property Laws

5. If it's mine, it must NEVER appear to be yours in any way.
6. If I'm doing or building something, all of the pieces are mine.
7. If it looks just like mine, it's mine.



# Toddler Property Laws

5. If it's mine, it must NEVER appear to be yours in any way.
6. If I'm doing or building something, all of the pieces are mine.
7. If it looks just like mine, it's mine.
8. If I saw it first, it's mine.



# Toddler Property Laws

5. If it's mine, it must NEVER appear to be yours in any way.
6. If I'm doing or building something, all of the pieces are mine.
7. If it looks just like mine,  
it's mine.
8. If I saw it first, it's mine.
9. If I think it's mine, it's mine.





# Toddler Property Laws

10. If it's broken, it's yours.

