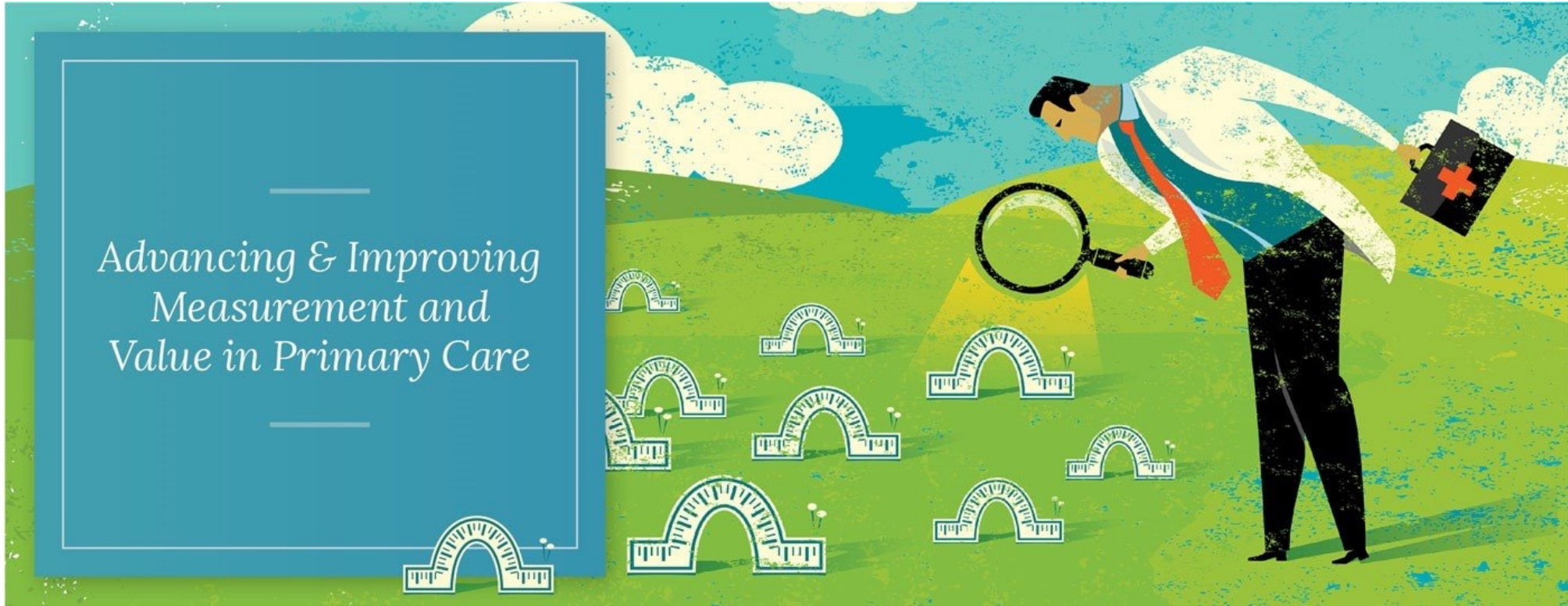
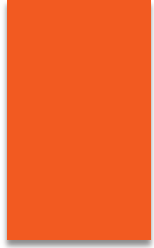




# STARFIELD SUMMIT



# Welcome!

- We will begin shortly.
- **Please make sure your microphone is muted unless you are speaking/presenting.**
- If you would like to ask a question or make a comment, please utilize the “raise hand” function or type in the chatbox.
- When introducing yourself during the roll call, please share your name, organization and position.
- We will keep this very brief so that we maximize our meeting time. Thank you!



# Poll Everywhere Instructions

- We will be utilizing the Poll Everywhere platform today.
- In preparation to submit your poll question responses, please register by computer or cell phone.
- Register by Computer: **pollev.com/chs** (link in chat)
- Register by Cell Phone: **Text “CHS” to 22333**



# Roll Call: Advisory Committee Members

- ▶ **Joel Andress, PhD** | ESRD Measures Development Lead, Division of Quality Measurement, CMS
- ▶ **Derek Baughman, MD** | Chief Resident, WellSpan Good Samaritan Hospital Family Medicine
- ▶ **Howard Beckman, MD, FACP, FACH, FNAP** | Clinical Professor of Medicine, Family Medicine and Public Health Science, URMC; Senior Consultant, Common Ground Health
- ▶ **Susannah M. Bernheim, MD, MHS** | Associate Professor; Director, Quality Measurement Programs (CORE); Assistant Clinical Professor, Section of General Internal Medicine; Core Faculty, Robert Wood Johnson Clinical Scholars Program
- ▶ **Beth Beudin-Seiler, PhD** | Health Care Research Analyst, Systems Research and Initiatives Group, Altarum
- ▶ **Arlene Bierman, MD, MS** | Director, Center for Evidence and Practice Improvement, AHRQ
- ▶ **Roger Bush, MD** | Primary Care Provider, Pike Market Medical Clinic, ABIM and ABFM Board Member
- ▶ **Daniel Carey, MD, MHCM** | Senior Vice President & Chief Medical Officer of the Physician Enterprise, Providence
- ▶ **Adrienne Casebeer, PhD, MPP, MS** | Director, Clinical Analytics and Trend, Humana
- ▶ **Michael Chernew, PhD** | Leonard D. Schaeffer Professor of Health Care Policy, Department of Health Care Policy, Harvard Medical School; Director, Healthcare Markets and Regulation Lab, Harvard Medical School
- ▶ **Gwen Darien** | Executive Vice President for Patient Advocacy and Engagement, National Patient Advocate Foundation
- ▶ **Adam Elshaug, MPH, PhD** | Director, Centre for Health Policy & Chair, Melbourne School of Population and Global Health (MSPGH) and Melbourne Medical School (MMS), University of Melbourne
- ▶ **Ishani Ganguli, MD, MPH** | Assistant Professor, Harvard Medical School; Internal Medicine, Brigham and Women's Hospital



# Roll Call: Advisory Committee Members

- ▶ **Rick Glazier** | Senior Core Scientist, Institute for Clinical Evaluative Sciences, Canada
- ▶ **Neeta Goel, MD** | Chief Medical Officer, Ambulatory Services, Inova Health System
- ▶ **Larry A. Green, MD** | Distinguished Professor of Family Medicine & Epperson-Zorn Chair for Innovation in Family Medicine and Primary Care, University of Colorado; Chair, ABMS Board of Directors
- ▶ **Diane Harper, MD, MPH, MS** | Professor, University of Michigan; NAPCRG; President, Board of Directors, NAPCRG
- ▶ **Aparna Higgins** | Senior Policy Fellow, Duke-Margolis Center for Health Policy
- ▶ **Karen Johnson, PhD** | Vice President, Division of Practice Advancement, AAFP
- ▶ **John Keats** | Market Medical Executive, Cigna Health Care
- ▶ **Reid Kiser, MS** | Director, Division of Quality Measurement, CMS
- ▶ **Bruce E. Landon, MD, MBA, MSc** | , Professor of Health Care Policy, Department of Health Care Policy, Harvard Medical School; Professor of Medicine and Practicing Internist, Beth Israel Deaconess Medical Center
- ▶ **Wendy Levinson, MD** | Chair, Choosing Wisely Canada
- ▶ **John Mafi, MD, MPH** | Associate Professor of Medicine, Division of General Internal Medicine and Health Services Research, David Geffen School of Medicine, UCLA; Affiliated Adjunct Physician Policy Researcher in Health Policy, RAND Corporation
- ▶ **Silas Martin** | Senior Director, Market Access Scientific and External Strategy, Johnson & Johnson
- ▶ **Ibe Mbanu, MD, MBA, MPH** | Senior Medical Director, Advocate Aurora Health
- ▶ **Mark McClellan, MD, PhD** | Robert J. Margolis Professor of Business, Medicine, and Policy, & Founding Director, Duke-Margolis Center for Health Policy, Duke University





# Roll Call: Advisory Committee Members

- ▶ **David Mirkin, MD** | Chief Medical Officer, Milliman MedInsight; Principal, Physician Healthcare Management Consultant, Milliman
- ▶ **Nora Mueller, PhD, MAA** | Staff Fellow, AHRQ
- ▶ **Amy Mullins, MD, CPE, FAAFP** | Associate Medical Director, Optum
- ▶ **Warren P. Newton, MD, MPH** | President & Chief Executive Officer, ABFM
- ▶ **Patrick O'Malley, MD, MPH, MACP** | Director, National Center for Excellence in Primary Care, AHRQ
- ▶ **Denise Pavletic, MPH, RD** | Deputy Director, Clinician Measures, ABFM Center for Professionalism and Value in Healthcare
- ▶ **Lars Peterson, MD, PhD** | Vice President of Research, ABFM
- ▶ **Robert L. Phillips, MD, MSPH** | Executive Director, The Center for Professionalism and Value in Health Care
- ▶ **Jacob Quinton, MD, MSHS, FACP** | Medical Officer, Center for Medicare and Medicaid Innovation (CMMI); Primary Care Internist
- ▶ **Barbra Rabson, MPH** | President and CEO, Massachusetts Health Quality Partners
- ▶ **Eugene Rich, MD** | Senior Fellow, Mathematica
- ▶ **Michelle Rockwell, PhD, RD** | Assistant Professor, Virginia Tech Carilion School of Medicine; Research Associate/Practice Facilitator, Carilion Clinic
- ▶ **David Schmitz, MD** | Professor and Chairman, Department of Family and Community Medicine, University of North Dakota School of Medicine and Health Sciences
- ▶ **Michelle Schreiber, MD** | Deputy Director for Quality and Value, Center for Clinical Standards and Quality, CMS
- ▶ **Bruce Sherman, MD, FCCP, FACOEM** | Medical Director, Employers Health Coalition



# Roll Call: Advisory Committee Members

- ▶ **Corinna Sorenson, PhD** | Director, Margolis Scholars Program in Health Policy and Management
- ▶ **Jason Spangler, MD, MPH, FACPM** | Executive Director, Global HTA Policy Strategy & Engagement, Amgen
- ▶ **Christina Stasiuk, DO, FACOI** | Market Medical Executive, Cigna Mid-Atlantic Region
- ▶ **Lauren Vela** | Director Health Care Transformation, Walmart
- ▶ **Kara Odom Walker, MD, MPH, MSHS** | Vice President & Chief Population Health Officer, Nemours Children's Health System



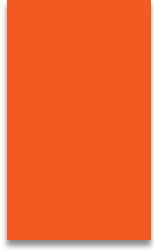
# Planning Committee

- **Beth A. Bortz, MPP** | President & CEO, Virginia Center for Health Innovation
- **Andrew Bazemore, MD, MPH** | Senior Vice President of Research and Policy, ABFM
- **A. Mark Fendrick, MD** | Professor, University of Michigan; Director, VBID Center
- **Stephen A Horan, PhD** | Founder & CEO, Community Health Solutions
- **Saraya A. Perry, MPA, MNM** | Project Coordinator, Virginia Center for Health Innovation
- **Jill Shuemaker, RN, CPHIMS** | Clinician Measure Director, The Center for Professionalism & Value in Health Care



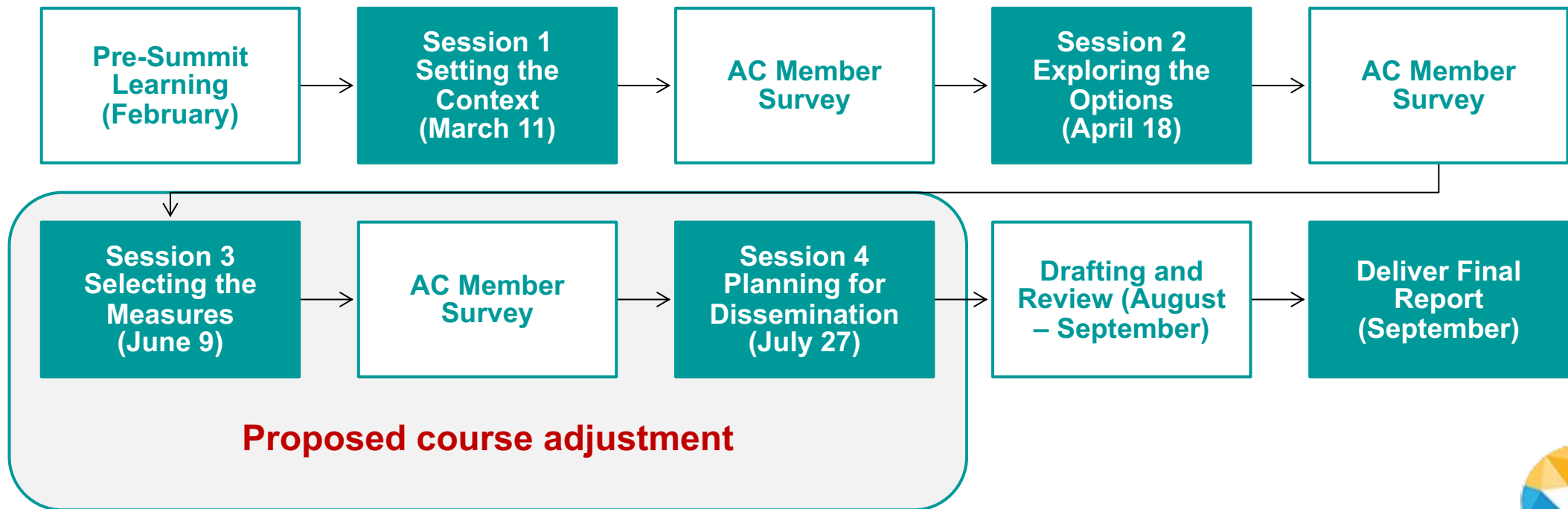


# Agenda



Time	Topic / Questions	Facilitators
1:00-1:10	Welcome, Introductions, and Overview of the Meeting	Beth Bortz, MPP Andrew Bazemore, MD
1:10-1:30	Charting the Course	Andrew Bazemore, MD
1:30-2:25	Focus on Drivers, Levers, and Stakeholders: <ul style="list-style-type: none"><li>• Summary of Survey Results</li><li>• Small Group Discussion</li><li>• Full Group Sharing</li></ul>	Team
2:25-2:40	Break	
2:40-3:50	Focus on Scope of Accountability and Research Agenda <ul style="list-style-type: none"><li>• Small Group Discussion</li><li>• Full Group Sharing</li></ul>	Team
3:50-4:00	Wrap-Up and Next Steps	Beth Bortz, MPP

# Workplan



# A Quick Recap of Sessions 1 and 2

## Session 1: Setting the Context



- Identified:
  - Reasons for identifying and measuring low-value care
  - Potential pitfalls and unintended consequences that might lead some PCPs to resist this type of action.
  - Ideas for designing measures that could authentically matter for reducing low-value care.

## Session 2. Exploring the Options

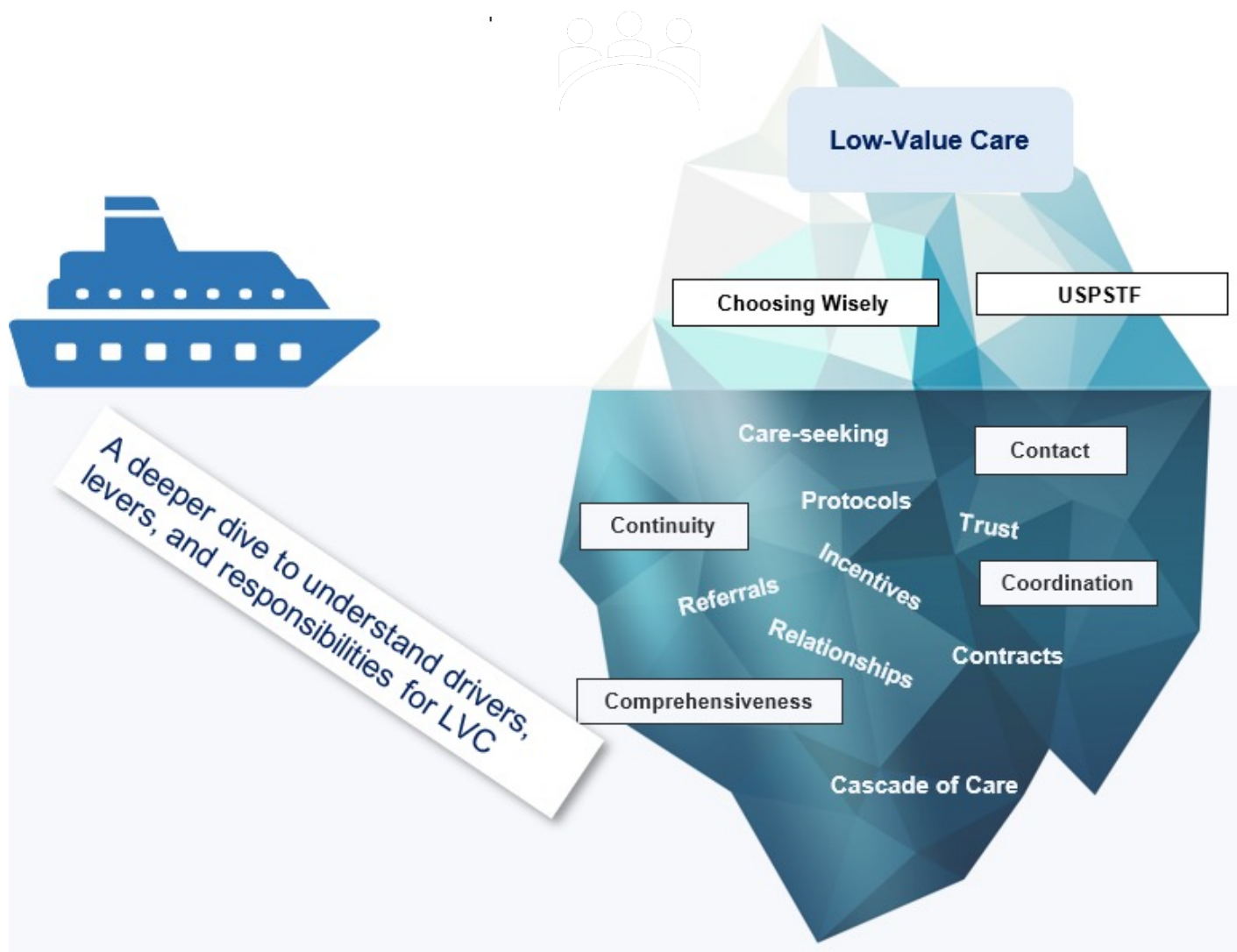


- Identified a working set of criteria for identifying viable measures of low value care.
- Explored the pros and cons of available options for identifying low-value care measures.

### What we heard:

- LVC decisions are influenced by a complex set of factors.
- An authentic approach should go deeper than identifying a set of low-value care measures from Choosing Wisely, the USPSTF, or some other ready source.
- We need a deeper dive to better understand drivers, levers, and stakeholder responsibilities...

# A Proposed Course Adjustment for Sessions 3 and 4



# A Proposed Course Adjustment for Sessions 3 and 4

## Session 3: A Deeper Dive

- What are the key drivers of LVC?
- What are the key levers for reducing LVC?
- Who are the key stakeholders that should be engaged?
- What is the appropriate scope of accountability?
- Where do we need to focus further research?

## Session 4. An Action Agenda

- Recommended actions for primary care
- Recommended actions for other key stakeholders
- Recommend a research and development agenda for reducing LVC



# Summary of Survey Results: Drivers, Levers, and Stakeholders

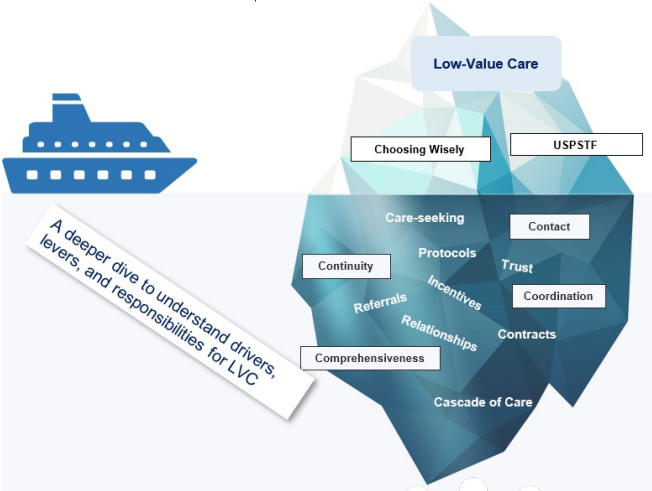
Download your copy from the chat box

Starfield Summit V - Survey Summary for Meeting 3

June 8th 2022



Summary Themes		
<p><b>Note: The results shown are based on 18 survey responses. The themes are loosely clustered and not listed in priority order. See detailed responses in the attached exhibits.</b></p>		
<p>1. What do you see as the most important drivers of low-value care for primary care patients?</p>	<p>2. What do you see as the most important levers for systematically identifying and reducing low-value care for primary care patients?</p>	<p>3. Who are the key stakeholders that should be engaged in shifting levers to reduce low-value care for primary care patients?</p>
Drivers	Levers	Stakeholders
<p><b>Patient focused:</b></p> <ul style="list-style-type: none"> <li><input type="checkbox"/> Lack of patient/PCP relationship</li> <li><input type="checkbox"/> Lack of understanding of patient beliefs</li> <li><input type="checkbox"/> Patient preference</li> <li><input type="checkbox"/> Lack of patient education and decision tools</li> <li><input type="checkbox"/> OTC advertisements, lack of accurate health information in popular media (e.g., cooking shows)</li> <li><input type="checkbox"/> Poor training and skills in how to respond to patient demand for services that are low value</li> </ul>	<p><b>Patient focused:</b></p> <ul style="list-style-type: none"> <li><input type="checkbox"/> A learning culture for patients and families</li> <li><input type="checkbox"/> Encourage patients to communicate with PCPs</li> <li><input type="checkbox"/> Placing warning labels stating this product has no evidence to support its claims</li> <li><input type="checkbox"/> For patients, provide point of care information on medical testing limits</li> </ul> <p><b>Payment focused:</b></p> <ul style="list-style-type: none"> <li><input type="checkbox"/> Move away from FFS</li> <li><input type="checkbox"/> Move greater percent of health care spend to primary care</li> <li><input type="checkbox"/> Robust incentives for PCPs to deliver care that is high in interpersonal continuity and comprehensiveness</li> <li><input type="checkbox"/> Payment based on quality rather than volume</li> </ul>	<ul style="list-style-type: none"> <li><input type="checkbox"/> PCPs</li> <li><input type="checkbox"/> Specialists</li> <li><input type="checkbox"/> Health systems</li> <li><input type="checkbox"/> Patients and families</li> <li><input type="checkbox"/> Patient advocacy groups</li> <li><input type="checkbox"/> Insurers</li> <li><input type="checkbox"/> Health plans</li> <li><input type="checkbox"/> Payers</li> <li><input type="checkbox"/> Purchasers</li> <li><input type="checkbox"/> Pharmacy benefit managers</li> <li><input type="checkbox"/> Drug makers</li> <li><input type="checkbox"/> Key professional organizations / societies</li> </ul>





# Small Group Discussion – Round 1

Download your copy from the chat box

Small Group Discussion Guide for June 9, 2022



## Round 1 – Drivers, Levers, and Stakeholders

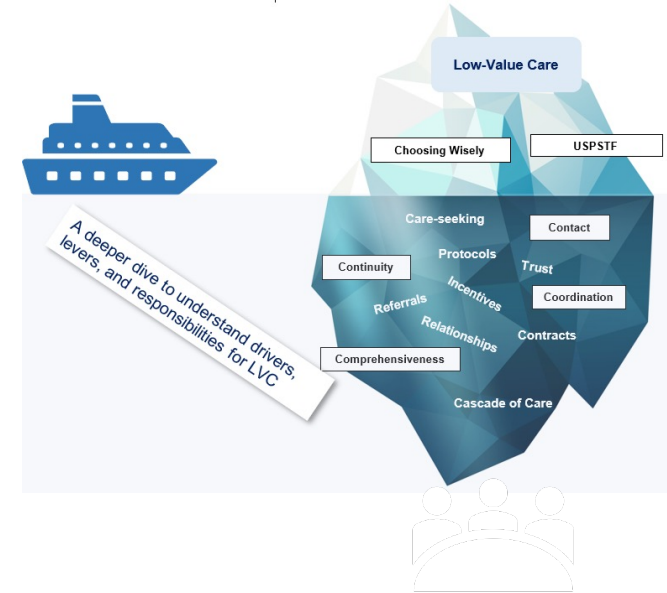
**Purpose.** The purpose of this segment is to assure that we have identified the key drivers, levers, and stakeholders to be considered in efforts to reduce low-value care for primary care patients.

**Three Questions.** This will be an informal discussion where everyone gets a chance to share their insights. We've outlined three questions to serve as a guide for discussion. Your facilitator will guide you through the discussion of each question.

Using the attached summary of survey themes as a reference:

Q1	Have we adequately identified the most important drivers of low-value care for primary care patients?
Q2	Have we adequately identified the most important levers for systematically identifying and reducing low-value care for primary care patients?
Q3	Have we adequately identified the key stakeholders that should be engaged in shifting levers to reduce low-value care for primary care patients?

**Report Out.** We encourage you to note your most important take-aways from this discussion so you are ready to share your thoughts with the full group. When we reconvene as a full group, we'll invite everyone to share your 'top of mind' answers to the discussion questions via Poll Everywhere.



# Full Group Sharing – Round 1

Share  
your  
insights:

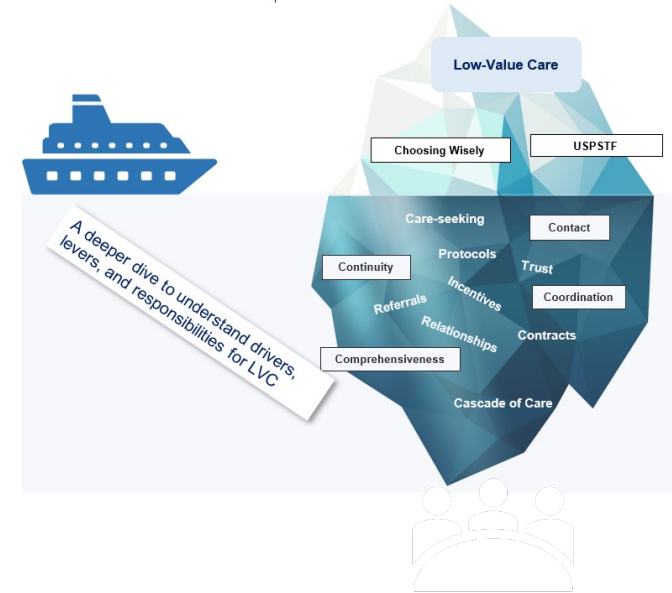


P1. Please add any additional key drivers you think are important

P2. Please add any additional key levers you think are important

P3. Please add any additional key stakeholders you think are important

- Register by Computer: [pollev.com/chs](http://pollev.com/chs) (link in chat)
- Register by Cell Phone: Text “CHS” to 22333



# Break

Please remain signed into the Zoom meeting.

Feel free to turn off your camera and mute your mic during the break.



# Small Group Discussion – Round 2

Download your copy from the chat box

Small Group Discussion Guide for June 9, 2022

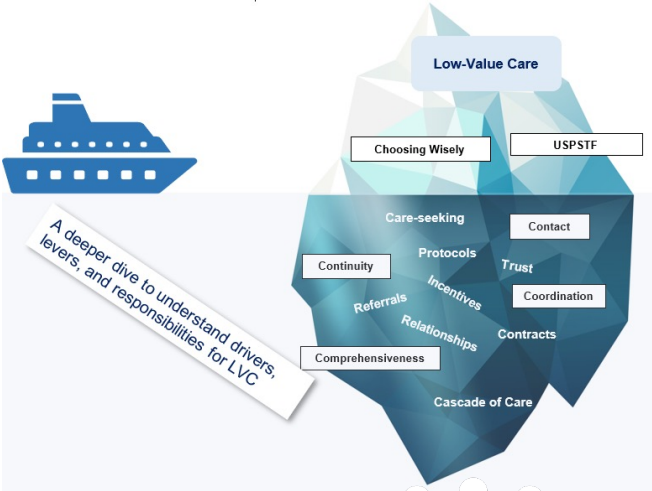


## Round 2 – Accountability and R&D Agenda

**Purpose.** The purpose of this segment is to identify points of accountability for reducing low-value care, plus identify topics for a research and development agenda for reducing low-value care.

**Three Questions.** This will be an informal discussion where everyone gets a chance to share their insights. We've outlined three questions to serve as a guide for discussion. Your facilitator will guide you through the discussion of each question.

As part of a system-wide effort to reduce low-value care for primary care patients:	
Q1	Primary care providers should be accountable for:
Q2	Other stakeholders in the system should be accountable for:
Q3	We should also pursue a research and development agenda to include:



# Full Group Sharing – Round 2

## Share your insights:

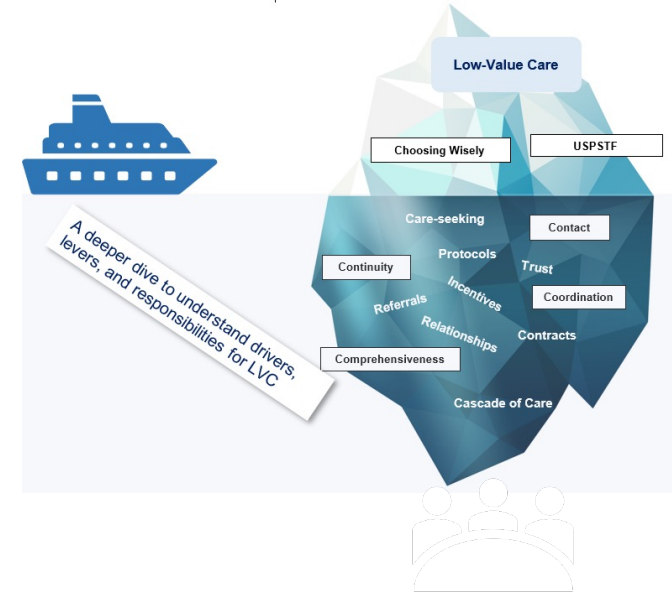


P1. Primary care providers should be accountable for:

P2. Other stakeholders in the system should be accountable for:

P3. We should also pursue a research and development agenda to include:

- Register by Computer: [pollev.com/chs](http://pollev.com/chs) (link in chat)
- Register by Cell Phone: Text “CHS” to 22333



# Wrap Up & Next Steps





# Meeting 4

## Meeting 4 – July 27, 2022

- ▶ An Action Agenda
  - ▶ Pre-meeting survey on suggested recommendations
  - ▶ Recommended actions for primary care
  - ▶ Recommended actions for other key stakeholders
  - ▶ Recommend a research and development agenda for reducing LVC

